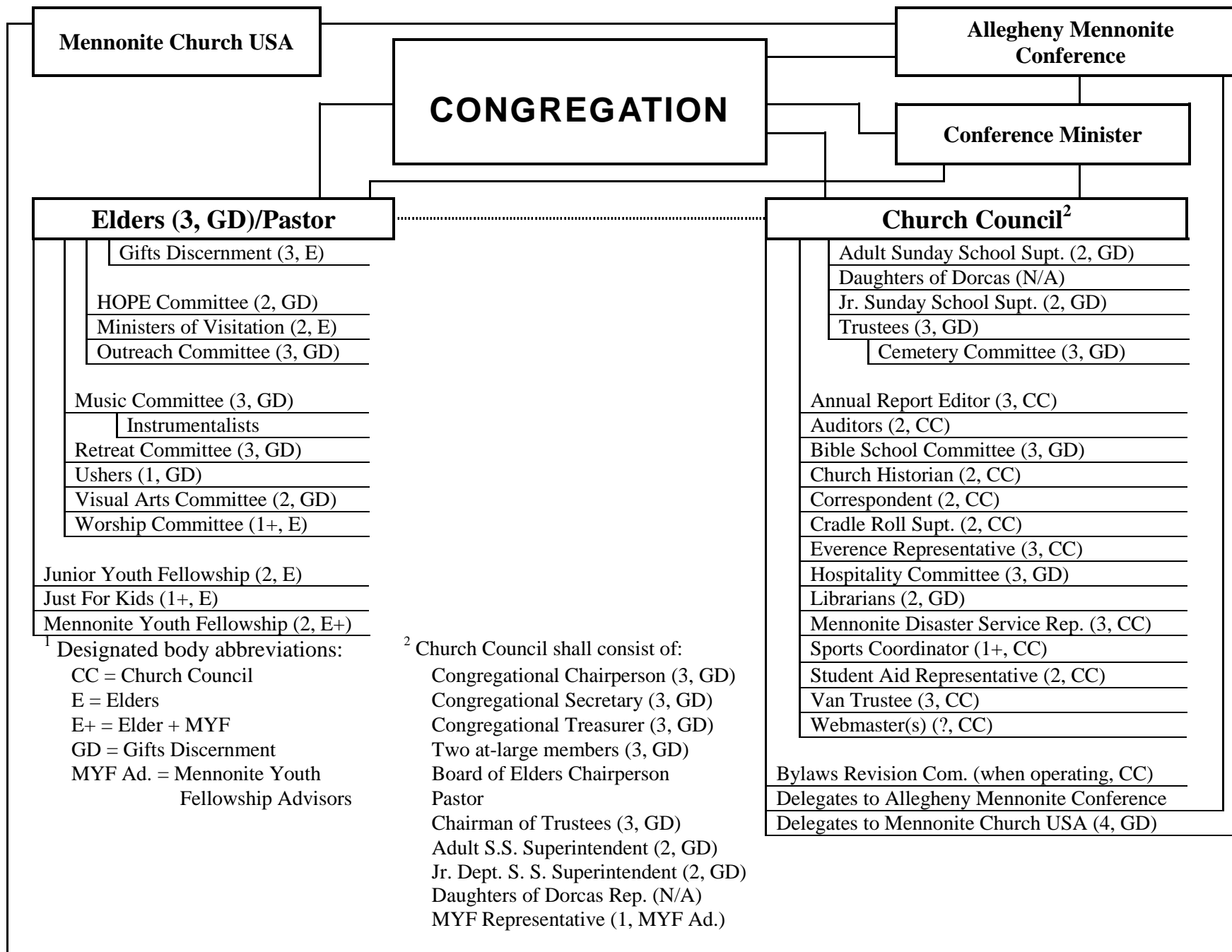


# Lines of Accountability for the Springs Mennonite Church

Term length, in years, and the designated body<sup>1</sup> to nominate or appoint the position are indicated parenthetically



<sup>1</sup> Designated body abbreviations:  
 CC = Church Council  
 E = Elders  
 E+ = Elder + MYF  
 GD = Gifts Discernment  
 MYF Ad. = Mennonite Youth Fellowship Advisors

<sup>2</sup> Church Council shall consist of:  
 Congregational Chairperson (3, GD)  
 Congregational Secretary (3, GD)  
 Congregational Treasurer (3, GD)  
 Two at-large members (3, GD)  
 Board of Elders Chairperson  
 Pastor  
 Chairman of Trustees (3, GD)  
 Adult S.S. Superintendent (2, GD)  
 Jr. Dept. S. S. Superintendent (2, GD)  
 Daughters of Dorcas Rep. (N/A)  
 MYF Representative (1, MYF Ad.)